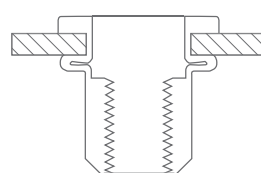
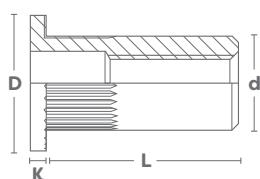




ACERO
STEEL



Cabeza Ancha - Cilíndrica Ranurada - Abierta
Flat Head - Cylindrical Knurled - Open End



M	Dimensiones Size	L mm.	Código Code	E mm.	N	nm	pcs
M3	D=6,5 mm. K=1,0 mm. d=4,9 mm. Ø 5,0 mm.	10	01031STFKNOB	0,5 - 3,0	4.000	1,2	10.000
M4	Ø 6,0 mm.	10	01041STFKNOB	0,5 - 3,0	6.800	3,0	8.000
		12	01042STFKNOB	3,1 - 4,0			7.000
M5	Ø 7,0 mm.	12	01051STFKNOB	0,5 - 3,0	10.000	6,0	5.000
		15	01052STFKNOB	3,1 - 6,0			4.500
M6	Ø 9,0 mm.	14,5	01061STFKNOB	0,5 - 3,0	15.000	10,0	2.500
		17,5	01062STFKNOB	3,1 - 6,0			2.000
M8	Ø 11,0 mm.	16	01081STFKNOB	0,5 - 3,0	27.000	24,0	1.500
		19	01082STFKNOB	3,1 - 5,5			
M10	Ø 13,0 mm.	17	01101STFKNOB	1,0 - 3,5	37.000	48,0	1.000
		22	01102STFKNOB	3,5 - 6,0			
M12	Ø 16,0 mm.	23	01121STFKNOB	1,0 - 4,0	54.000	82,0	500
		26	01122STFKNOB	4,1 - 6,0			

Bajo petición disponible en cuerpo liso.
On request available plain body.